



Creative Planning & resources

PHONE: 516.935.9355 FAX: 718.228.6125

Background



Silhouette Fitness Center, Brooklyn, NY (before)

Our office, centrally located in Nassau County, Long Island gives us easy access and a fast response time to site emergencies and last minute changes.



Silhouette Fitness Center, Brooklyn, NY (mid-project).

To see more of this project visit:

<http://thisainteasyc.com/urban/pictures.html>

Creative Planning for Professionals, Inc., aka **CPR** -

Creative Planning & Resources is a contract furniture dealership located in Bethpage, Long Island, New York. **Creative Planning** is a woman owned business. We were established in 1997 as primarily a design-build firm. We have designers on staff as well as office furniture professionals.

We were born out of a need for competent space planners and designers who were capable of translating clients' needs into working solutions that were both cost effective and functional.

Whether it is a new facility or a renovation, we can help streamline the process and ensure the most efficient and economical approach to your project.

Throughout the projects it accepts, **Creative Planning** embraces a partnering philosophy. During the early design stages -- to help review plans and specifications -- and later -- to provide ideas and calculate costs -- partnering presents the client with the strength of many different minds from a variety of skill sets all with one goal in mind: satisfying the client.

We welcome the team approach.

By committing to the success of our entire team, we develop a service and solutions attitude to our projects. In turn, that allows **Creative Planning** to continue to cultivate and develop strong and enduring relationships.

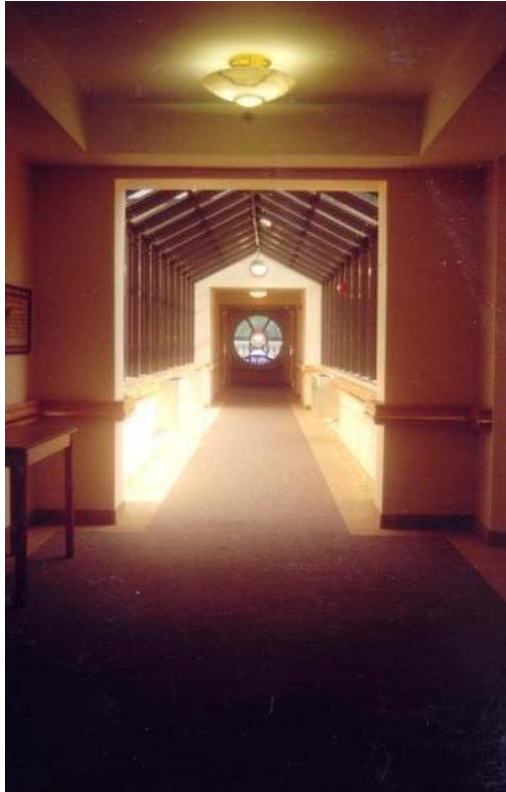
We believe, that the workspace directly effects productivity. Intelligent office design is vital to growth. People feel their environment. How people feel impacts their performance.



PHONE: 516.935.9355 FAX: 718.228.6125

Creative Planning & resources

C.P.R.esources



Marian Woods

From planning & development through project closeout, we handle all tasks associated with your project.

Our Services Include:

- Preliminary drawings and meetings
- Design analysis and cost estimating
- Architectural services: plans, permits, etc.
- Schedule coordination
- Alternative evaluations: we enjoy "what ifs"
- Facilitation of approval of materials & finishes
- Down-time considerations
- Real world budgeting
- Interior design services
- Installation and recommendation of finishes
- Custom cabinetry fabrication and installation
- Office Furniture Sales: Casegoods, Seating, Systems & Filing

Interior Solutions

- Open Space Planning
- Window Treatments, Floor Covering
- Art Work, Wall Finishes, Accessories
- Voice & Data Cabling
- Real Estate Solutions
- Financing Solutions
- Remanufactured & As-is Furniture
- Old Furniture Removal
- Delivery & Installation and Relocation Services

Communication Tools

- Power Point Presentations
- GIZA and AutoCad drawings
- 3-D illustration / story boards
- Interactive websites featuring project key points

CLICK FOR EXAMPLE:

<http://creativeplanning.org/gannett-31.htm>



Acartha Group, LLC., East Brunswick, NJ.



Creative Planning & resources

PHONE: 516.935.9355 FAX: 718.228.6125

From Concept through Completion



New York City Corporate Offices: Gannett, Inc.

Creative Planning offers its clients a full range of in-house professional services such as:

architectural, interior design, computer aided design (AutoCad), space planning and estimating services.

By providing these services ourselves we are able to control the quality of the management and the scheduling of projects more accurately.

All of our services are managed by professionals with extensive experience.

At **Creative Planning**, we believe that the key to our success is in our people. For a decade, we've continued to grow and build on our strengths, while maintaining our deep commitment to the communities and the clients we serve.

We put people first.

Our staff consists of highly skilled and trained individuals of whom we are very proud. From field supervisors with engineering backgrounds to AutoCad operators, our staff is top notch and always improving. We extend the same level of commitment to our staff as we do to our clients by ensuring that they are provided challenging opportunities, an environment that welcomes creative thinking, encourages doing things differently than the competition and rewards individual efforts.



USA Today, Madison Avenue - NYC

The caliber of our staff provides us a solid foundation for our efforts and the progress needed to reach our goals.



Creative Planning & resources

PHONE: 516.935.9355 FAX: 718.228.6125

Principals -- years of experience.

A decade ago, **Frances Corrado, President**, founded Creative Planning when she could not find a top notch single- source-solution for project management / design-build opportunities that would satisfy the needs of a growing list of professional clients.

Today, Creative Planning boasts a retinue of on-staff designers, space-planners and office furniture professionals. After a decade, Creative Planning remains unique to the industry -- an innovative, creative, affordable solution to workspace dilemmas.

Our mission? Turn business environments into workspace solutions. Give all our clients affordable, beautiful and functional places to work in.

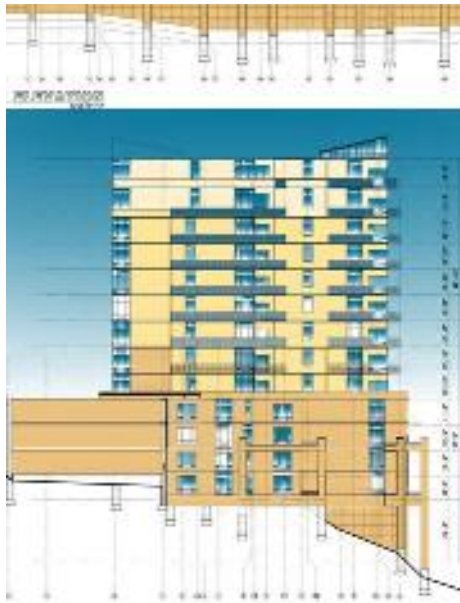
Frances A. Corrado, owner, is a designer and affiliate of International Interior Design Association received her BFA from CUNY in 1989 where she studied aesthetics, design and color.

Ms. Corrado worked in professional offices for over 10 years before deciding to design them. She has taken particular interest in human engineering and client and staff interaction.



Her experience in office efficiency and management serve her well in her design of highly functional and cost effective commercial environments. And her

background in promotions, public relations and corporate image production are invaluable aids in her designs.



Ridgehill Village, New Jersey

David Lawrence Mammina Architect, LLC serves as this company's architect for New York and New Jersey based projects.

David Mammina, AIA, Member, New York State Association of Architects and member of the New York City Architects Council is licensed to practice in New York and New Jersey. He was voted winner of Queens County Builders and Contractors Associates, First prize for excellence in design three years in a row, as well as the winner of the Queens Chamber of Commerce First Prize for Excellence in Design and Queens County Builders and Contractors Association First Prize for Excellence in Design.



Among other associations David is President of the American Institute of Architects, Queens Chapter; Delegate to the

New York State Association of Architects; Delegate to the New York City Architects Council and Delegate to the New York Cities' Commissioner of Buildings Task Force on Policies and Procedures.

Current and recent clients include The Lefrak Organization in Forest Hills, NY; Staples - The Office Superstore; Towers of America in Jersey City, a 32 story, 346 unit building initiative funded by the Federal Department of Housing and Urban Development and Stuart Weitzman Shoes in New York City.



Long Island Residential Interior: Faux Finishing, Interior Design



Creative Planning & resources

PHONE: 516.935.9355 FAX: 718.228.6125

Make your office a working asset.

First Impressions should instill a sense of confidence in your clients and a feeling that they are in good hands. Quality service, stability, efficiency and professionalism must be communicated. That is where we come in.



Toyota Showroom, Bronx, NY (remanufactured Ethospace)

Effective workplace solutions reduce costs and maximize space and productivity without sacrificing style and beauty. Today's highly competitive business environment demands them. We provide them. We work with you to carefully determine your needs, define your goals and find solutions unique to you.



Allstate Insurance, Danbury, CT (remanufactured Action Office)

Our plan is your success.

The design and construction process consists at its core of three distinct parts: planning and development, construction, and closeout.

We are there through each of them.

We offer you a single source of responsibility from your project's conception through its completion and through each of its many possible phases.



PROJECT MANAGEMENT . INTERIOR DESIGN . SPACE PLANNING . OFFICE FURNITURE

Creative Planning & resources

PHONE: 516.935.9355 FAX: 718.228.6125

C.P.R. eferences

<http://www.stuartweitzman.com/>



Our clients are as varied as our projects both in size and in scope.

From 35 stories to 40,000 square feet to 4,000 square feet; from gut rehabilitation to wall covering, we treat each job with equal respect and consideration, bringing our full service mentality to every table. Our clients range from Fortune 500's to dotcoms to Mom & Pop businesses.

<http://www.promosuite.net>



We have many references and job details available upon request. Click on the links to see who some of our clients are.



<http://dkidirect.com/>



<http://usatoday.com/>



TOYOTA

<http://www.bronxtoyota.com/>



<http://gannett.com/>



THE WORLD'S LEADING DIGITAL DISTRIBUTOR OF MUSIC

<http://theorchard.com/>



emusic.
<http://www.emusic.com/>



<http://www.capellinewyork.com/USA/default.asp>

ACARTHA GROUP

<http://www.acarthagroup.com/>



<http://capture.com/>

Creative Planning

PHONE: 516.935.9355 FAX: 718.228.6125

& resources

interiors...



Creative Planning

PHONE: 516.935.9355 FAX: 718.228.6125

& resources

exteriors...



BUENAVIDA NURSING HOME



TOWERS OF AMERICA



VILLAGE OF LAKE SUCCESS



ST. JOSEPH'S ELEVATOR ADDITION



BRISTAL AT NORTH HILLS



CHURCH OF ST. MARY



ST. PHILIP R.C. PARISH CENTER



RIDGE HILL VILLAGE

Creative Planning & resources

PHONE: 516.935.9355 FAX: 718.228.6125

systems furniture...

